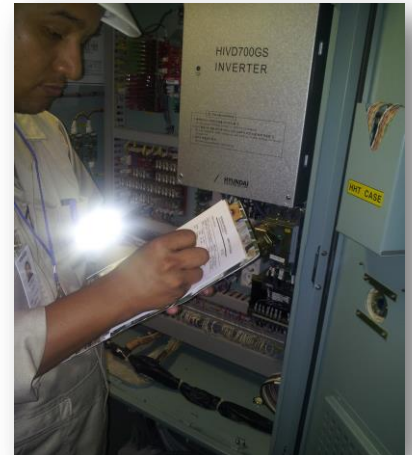




**Panama Office**  
 Domingo Díaz Ave. Sun Village N°55  
 Panama Rep. of Panama  
 Tel: 507-2337972  
 Fax: +507-2337972  
 Mobile: +507) 69988829  
 Email: [marine@alfatecpty.com](mailto:marine@alfatecpty.com)



**What are the rules and regulations in the marine elevator market?**

IMO does not have any special inspection requirement for crew elevators on ship. However, the SOLAS Convention chapter I, part B (Surveys and certificates) requires that it is established that all equipments in satisfactory conditions and fit for the service for which it is intended, so that would also include elevators.



Dr. Heike Deggim  
 Head. Marine Technology Section  
 Maritime Safety Division / International Maritime Organization  
 Email: [hdeggim@imo.org](mailto:hdeggim@imo.org) Tel: +44(0)2075873154

With a staff of highly trained marine elevator professionals Alfatec takes great pride in being the preferred marine elevator service provider to world's largest shipping companies in Panama ports, terminals, at anchor and during transit of the Panama Canal.

Alfatec provides quality services under internationally recognized maritime regulations using strict control over preventive maintenance procedures, repairs and inspections. This includes photographic images of the actual condition of your elevator equipment which we send to you as a part of our field reporting procedures.

We perform all services including: change of traction sheaves and pulleys, main ropes, guide rails, load tests, door operator adjustments, and electrical and electronic repairs for the safe and proper operation of your marine elevator equipment.

Our goal is to provide responsive service tailored to meet the individual needs of our valued customers. We can confidently affirm that we are large enough to solve your problems and small enough to provide personal care.



All brands and types of marine elevators

